

AutoScan-DS100

Entry Level Solution



Blue Light Scanning

Technology

Blue light 3D scanning technology replaces the white light 3D scanning technology, less sensitive to the ambient light

High Precision

AutoScan-DS100 scanning precision is less than 0.015 mm. The margin line and surface of dies are quite sharp

High Efficiency

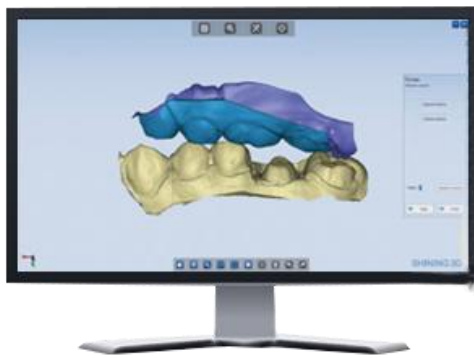
Scanning time : full arch 18s ; upper jaw / lower jaw 40s ; 1~8 teeth 41s; impression 120s



Model	AutoScan-DS100
Camera Resolution	1,300,000
Accuracy	<0.015mm
Scanning Range	100mm*100mm*75mm
Scanning Time	full arch 18s upper jaw / lower jaw 40s 1~8 teeth 41s impression 120s
Scanning Principle	structured blue light 3D scanning
Temperature	10°C~30°C (higher temperature may affect the scanning result)
Dimension	315mm*320mm*470mm
Weight	20kg
Output	STL
Interface	USB 2.0
Power	AC24V

AutoScan-DS200+

Unmatched Scan Speed



Color Texture Capturing Function

Capture the complete plaster model and marks drawing by hand clearly, the fine details offers a reference in the digitizing design for dental technicians

High Precision

AutoScan-DS200+ scanning precision is less than 0.015 mm. The margin line and surface of dies are quite sharp

High Efficiency

Scanning time : full arch 6s ; upper jaw / lower jaw 18 ; 1~8 teeth 20s; impression

Model	AutoScan-DS200+
Camera Resolution	1,300,000
Accuracy	<0.015mm
Scanning Range	100mm*100mm*75mm
Scanning Time	full arch 6s upper jaw / lower jaw 18s 1~8 teeth 20s impression 80s
Scanning Principle	structured blue light 3D scanning
Temperature	10°C~30°C (higher temperature may affect the scanning result)
Dimension	315mm*320mm*470mm
Weight	20kg
Output	STL,OBJ
Interface	USB 3.0
Power	AC24V

AutoScan-DS300

Articulator Scanning Supported, Higher Resolution



High Resolution

AutoScan-DS300 features higher camera resolution, the camera resolution up to 3.0 megapixels

Articulation Scan

AutoScan-DS300 features bigger scan space, articulation scan function is supported

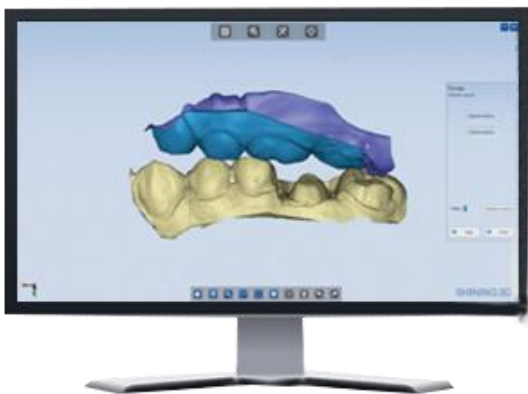
High Efficiency

Scanning time : full arch 12s ; upper jaw / lower jaw 30s ; 1~8 teeth 37s; impression 120s

Model	AutoScan-DS300+
Camera Resolution	3,000,000
Accuracy	<0.015mm
Scanning Range	100mm*100mm*75mm
Scanning Time	full arch 12s upper jaw / lower jaw 30s 1~8 teeth 37s impression 120s
Scanning Principle	structured blue light 3D scanning
Temperature	10°C~30°C (higher temperature may affect the scanning result)
Dimension	325mm*325mm*470mm
Weight	19kg
Output	STL,OBJ
Interface	USB 3.0
Power	AC24V

AutoScan DS-X

Most Cost-effective Choice



Blue Light Scanning Technology

Blue light 3D scanning technology replaces the white light 3D scanning technology, less sensitive to the ambient light

Cost-effective

The 3D scanner helps you enter the digital dental field with low threshold and it has the stablest quality, the most favorable price with no bundle sales

High Efficiency

Scanning time : full arch 18s ; upper jaw / lower jaw 40s ; 1~8 teeth 41s; impression 120s

Model	AutoScan-DSX
Camera Resolution	1,300,000
Accuracy	<0.015mm
Scanning Range	100mm*100mm*75mm
Scanning Time	full arch 18s upper jaw / lower jaw 40s 1~8 teeth 41s impression 120s
Scanning Principle	structured blue light 3D scanning
Temperature	10°C~30°C (higher temperature may affect the scanning result)
Dimension	280mm*350mm*445mm
Weight	18kg
Output	STL
Interface	USB 3.0
Power	AC24V

Shining 3D Intra-oral scanner



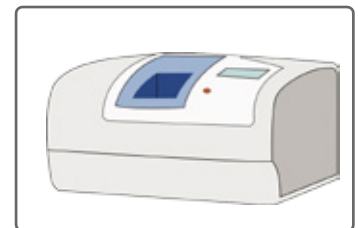
Real-time 3D scanning, easy and fast to capture Digital impression. High quality digital model, open system, Compatible with CAD/CAM system



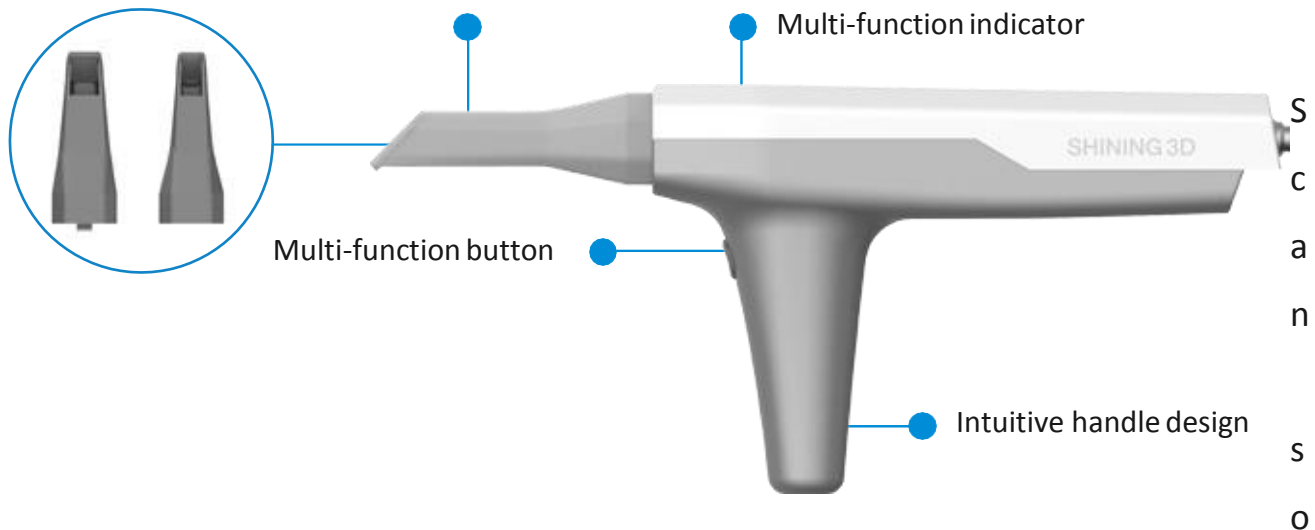
Scan



Design



Mill



Software: Real-time 3D Image

Indicator tells the scan status Fast re-locating scan

Touch screen supported

Can be used as an intra-oral camera

Different types of scan-tip Suitable for different patients Can be reused after disinfection



SHINING 3D®

3Dvisual

Escaner	DS-X	DS100	DS200+	DS300	IntraOral scanner	EXOCAD (Standard
Precio PVP	7.500€	8.300€	10.000€	11.600€	10.500€	2,050€
Texture function	NO	NO	SI	SI		Cada modulo extra añadir 500 € (creator module cuesta 1,000€)
LED light	BLU	BLU	BLUE	BLUE		
Articulation transfer fixture	NO	NO	NO	SI		
Precios Lanzamiento						
Hasta 31/12/2016	7.100€	7.900€	9.600€	11.100€	9900€	2.000€ version básica)

Modulos	Precio	Precio
Implant	500€	15€
Virtual	500€	10€
Bar	500€	15€
DicomVi	500€	10€
Bite	500€	15€
Provision	500€	15€
Trusmile	500€	15€
Tooth	500€	15€
Model	1,000€	15€



SHINING 3D®

